

Hinchliffe Farm – Progress Newsletter



Week Ending : 01 February 2019

Key statistics:

70

meters of access
road installed

100%

Local Labour
(within Yorkshire)

623

emails sent

26

deliveries received



@iandgltd

www.iandgltd.co.uk

Proud to be part of
Sewell Group



Working in
partnership with

 **HINCHLIFFE'S**



progress...

A further two weeks into the 'big build' and here's a brief insight into what we have been up to...

- ✓ reduce level dig to the building foot print completed
- ✓ broken out concrete slab and blocks have been crushed and used as fill materials
- ✓ service road partially completed to serve clients temporary access
- ✓ areas within new building foot print have been stoned



@iandgltd
www.iandgltd.co.uk

Proud to be part of
Sewell Group



Working in
partnership with





installation of new access road to rear of existing temporary farmshop...



 @iandgltd
www.iandgltd.co.uk

Proud to be part of
Sewell Group



Working in
partnership with

 **HINCHLIFFE'S**



secured access road through the construction site...



 @iandgltd
www.iandgltd.co.uk

Proud to be part of
Sewell Group



Working in
partnership with





crusher plant in operation...



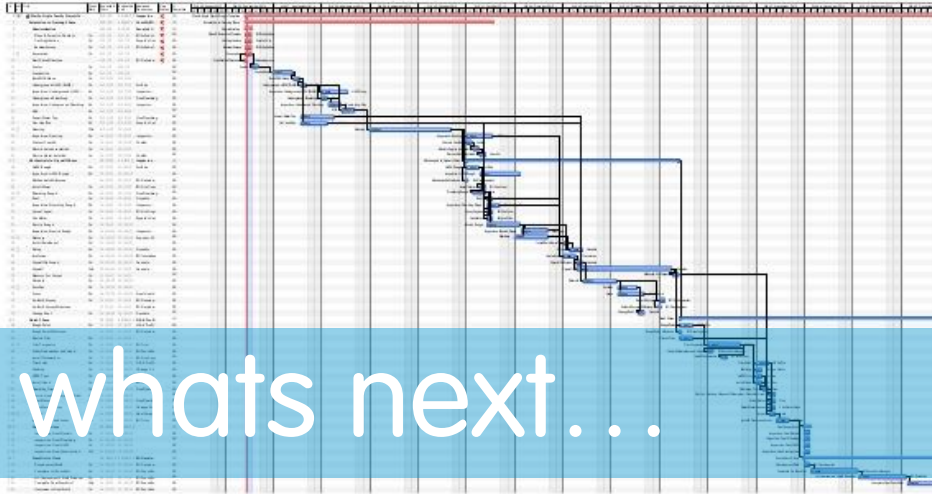
 @iandgltd
www.iandgltd.co.uk

Proud to be part of
Sewell Group



Working in
partnership with

 **HINCHLIFFE'S**



whats next...

over the next couple of weeks...

- ✓ installation of underground drainage
- ✓ resetting out works
- ✓ foundation excavations
- ✓ concrete pour to foundation and ring beams
- ✓ bolt box setting
- ✓ installation of steel frame structure



@iandgltd

www.iandgltd.co.uk

Proud to be part of
Sewell Group



Working in
partnership with

 **HINCHLIFFE'S**

BREAKING NEWS

as seen on tv...



the 'big build' on Look North...



@iandgltd
www.iandgltd.co.uk

Proud to be part of
Sewell Group



Working in
partnership with

 **HINCHLIFFE'S**



meet the team...

Jeremy Illingworth

What is your role on the project?

Managing Director

What do you think about the project?

"It's a pleasure to be working with a likeminded Huddersfield family orientated company, especially as it is one which I have a personal affiliation too. I grew up in the village of Netherton and often shopped with my parents at the original farm-shop and I therefore appreciate how much the 'big build' means to the Hincliffe family and loyal customers."

What do you like doing outside of work?

"My passion is football and I am a season ticket holder at Huddersfield Town, I attempt to play golf... in the summer ☺ and enjoy spending time with my family."



@iandgltd
www.iandgltd.co.uk

Proud to be part of
Sewell Group



Working in
partnership with





here's one we made earlier...

Holgate Building - York

York St John University's objective was to create a vibrant, welcoming and social student hub that encourages students to access services and feel comfortable approaching staff for help and advice.

The Holgate Building sits at the heart of the campus and houses student services, staff offices and student resource rooms spread over three floors.

The refurbishment amalgamated the core provision of student services including student welfare, finance and a reception area into a centralised, easily accessible, 'one stop shop' hub.

Value : £1.2 million | Duration : 18 weeks



@iandgltd
www.iandgltd.co.uk

Proud to be part of
Sewell Group



Working in
partnership with





lights, camera, action...



click play to watch a walk through video of the York St John's University project...



@iandgltd
www.iandgltd.co.uk

Proud to be part of
Sewell Group



Working in
partnership with





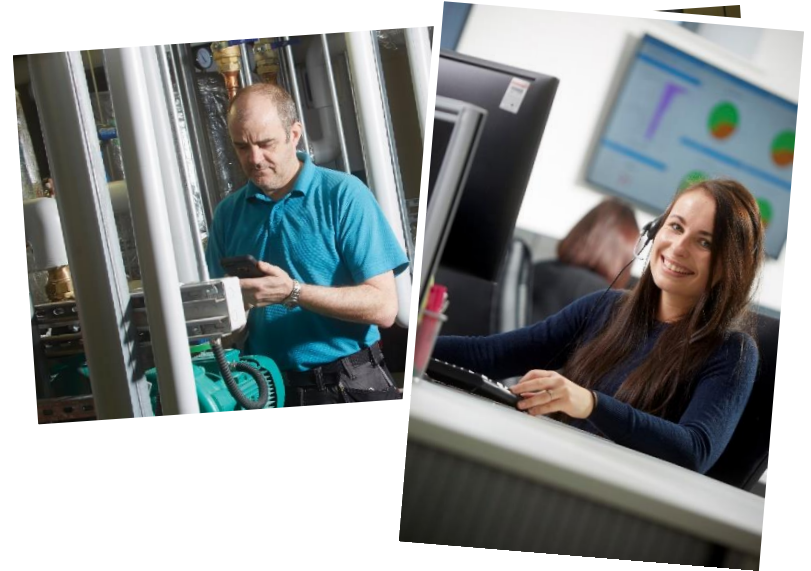
a closer look...

In 2017 I&G joined the Sewell Group – a multi-disciplined group of companies that operates across the Yorkshire region.

Sewell Facilities Management's priority is to provide peace of mind around the clock. From general maintenance and lifecycle planning, to preventative programmes of works and statutory compliance, our local, hands on support team ensures your buildings are safe, legal, well maintained and fit for purpose 24/7.

For decades Sewell Facilities Management has provided local, hands on support to ensure schools, health centres and community buildings are safe, legal and well maintained.

[Click here](#) to find out more about Sewell Facilities Management's services



@iandgltd
www.iandgltd.co.uk

Proud to be part of
Sewell Group



Working in
partnership with

