

Hinchliffe Farm – Progress Newsletter



Week Ending : 18 January 2019

Key statistics:

900

cubic meter of spoil
taken away

100%

Local Labour
(within Yorkshire)

122

Cups of Tea

2019

Happy New Year



@iandgltd

www.iandgltd.co.uk

Proud to be part of
Sewell Group



Working in
partnership with

 HINCHLIFFE'S





Firstly I would I take this opportunity to wish you all a Happy New Year from everyone at i&g!

It's been a positive two weeks on site since the last newsletter and here's a brief insight into what we have been up too...

- ✓ Works are progressing well with the general site clearance and reduce level dig well underway
- ✓ Samples were taken from the areas highlighted by Mugen Geo in accordance with the remediation strategy and these have come back all clear.
- ✓ Design stage of the structural steel is completed and production of the steel has started.
- ✓ The old cattle shed wall has been removed from site ready for the repair to the.



@iandgltd
www.iandgltd.co.uk

Proud to be part of
Sewell Group



Working in
partnership with

 **HINCHLIFFE'S**





4:3
16 M



HAPPY NEW
2019
YEAR



Reduced level dig to the rear service yard



@iandgltd
www.iandgltd.co.uk

Proud to be part of
Sewell Group



Working in
partnership with

 HINCHLIFFE'S



4:3
16 M

HAPPY NEW
2019
YEAR

Reduced levels looking back towards the temporary farmshop



@iandgltd
www.iandgltd.co.uk

Proud to be part of
Sewell Group



Working in
partnership with

 HINCHLIFFE'S





4:3
16 M



HAPPY NEW
2019
YEAR

Concrete slabs set aside waiting for the crusher



@iandgltd
www.iandgltd.co.uk

Proud to be part of
Sewell Group



Working in
partnership with

 HINCHLIFFE'S





4:3
16 M



HAPPY NEW
2019
YEAR

The old cattle shed wall has been removed, ready for repairing the dry stone wall



@iandgltd
www.iandgltd.co.uk

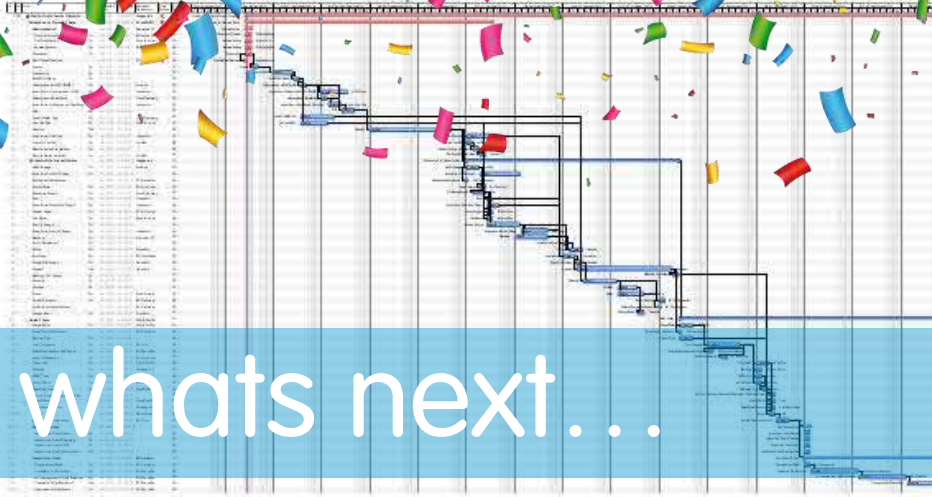
Proud to be part of
Sewell Group



Working in
partnership with

 HINCHLIFFE'S





over the next couple of weeks...

- ✓ Continue with the reduce level dig and excavate for the foundations
- ✓ Set out and install the proposed temporary access road around the new building
- ✓ Removal of the existing septic tank.
- ✓ Coordinate the rebuild of the dry stone wall
- ✓ Design approval for the VELFAC windows and doors.



@iandgltd
www.iandgltd.co.uk

Proud to be part of
Sewell Group



Working in
partnership with

 HINCHLIFFE'S





Louis Martin

What is your role on the project?
Project Manager/Quantity Surveyor

What do you think about the project?
"I think it's a really exciting project, a really interest project to be delivering, and the fact that we are two recognised local companies working together is great too."

What do you like doing outside of work?
"I love to cook, I spend many an hour in the kitchen working on complex dishes, I just don't like the washing up afterwards. I also love being outdoors and do a lot of walking in the Peak District and North Yorkshire Moors."





HAPPY NEW
2019
YEAR

here's one we made earlier...

Kirkwood Hospice - Huddersfield

A new build 16 bed in-patient unit to enable the provision of specialist care, free of charge to adults in Kirklees with advanced, progressive illnesses at any time from diagnosis to the end of life.

The contract incorporated significant demolition of the face of the existing in-patient unit to enable the 720sqm of new build, reconfiguration and refurbishment works to take place.

Each specialist care room incorporated large French windows allowing a bed to fit through so that patients could access the private terraces and newly landscaped gardens.

Value : £3.0 million | Duration : 56 weeks



@iandgltd
www.iandgltd.co.uk

Proud to be part of
Sewell Group



Working in
partnership with





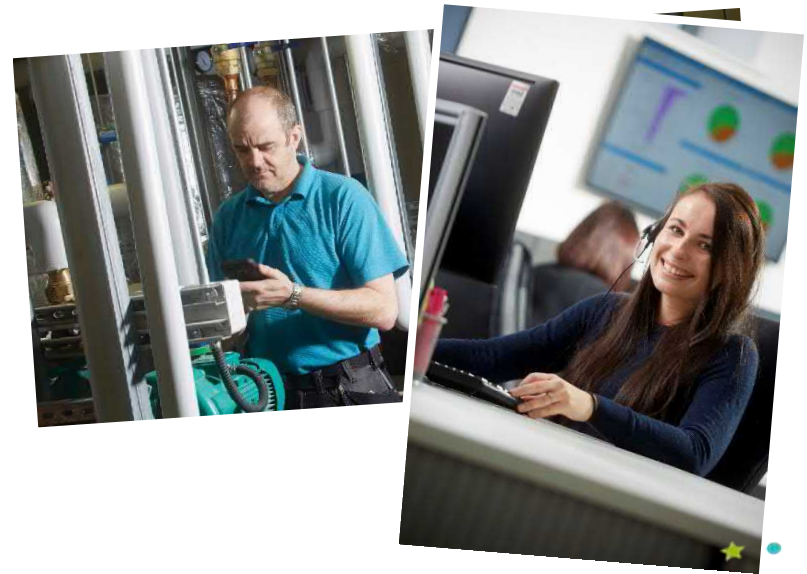
a closer look...

In 2017 I&G joined the Sewell Group – a multi-disciplined group of companies that operates across the Yorkshire region.

Sewell Facilities Managements priority is to provide peace of mind around the clock. From general maintenance and lifecycle planning, to preventative programmes of works and statutory compliance, our local, hands on support the team ensures your buildings are safe, legal, well maintained and fit for purpose 24/7.

For decades Sewell Facilities Management has provided local, hands on support to ensure schools, health centres and community building are safe, legal and well maintained.

[Click here](#) to find out more about Sewell Facilities Management’s services



@iandgltd
www.iandgltd.co.uk

Proud to be part of Sewell Group



Working in partnership with

